

EASY TO ↑
INSTALL

↑
FOR POLE MOUNTING 4 U-BOLTS ARE
REQUIRED SEE PG.2 FOR MORE DETAILS.
(U-BOLTS NOT INCLUDED)

Solera Solar Lighting 50W Hybrid area light introduces technology to leverage both solar and line voltage to power. High Performance solar controller maximizes solar charge under all conditions.

- 50W hybrid area light switches from cost-free solar to line voltage, only when the long-lasting battery is depleted.
- All-in-one design.
- Exclusive long-lasting battery withstands extreme temperatures.
- Easy to install and operate.
- Adjustable solar panel — can be mounted up to 16 ft away from light engine.
- Custom optics and color temperatures available.
- Advanced battery lasts at least 2,000 charge cycles.
- See pg. 2 for product dimensions & accessories.
- See pg. 3 for photometrics.



CERTIFIED BATTERY



BATTERY CHARGE TIME



BATTERY CHARGE TEMP



BATTERY LIFE



REPLACEABLE BATTERY



MOTION SENSING



OPERATING TEMP



100,000hrs RATED LIFE

PART #	UPC	COMPARES TO	LUMENS	COLOR	EPA	LISTINGS
SL-SAL-HYB-50W-40K-SF-BK-G2	844006081430	400W	9800	4000K	6.1	

OPERATING MODES |  TIMER |  MOTION SENSING

BRACKET & ADDITIONAL SOLAR PANEL - MUST ORDER SL-SAL-50W-2PANELKIT SEPARATELY (SHIPPED IN A SEPARATE BOX)

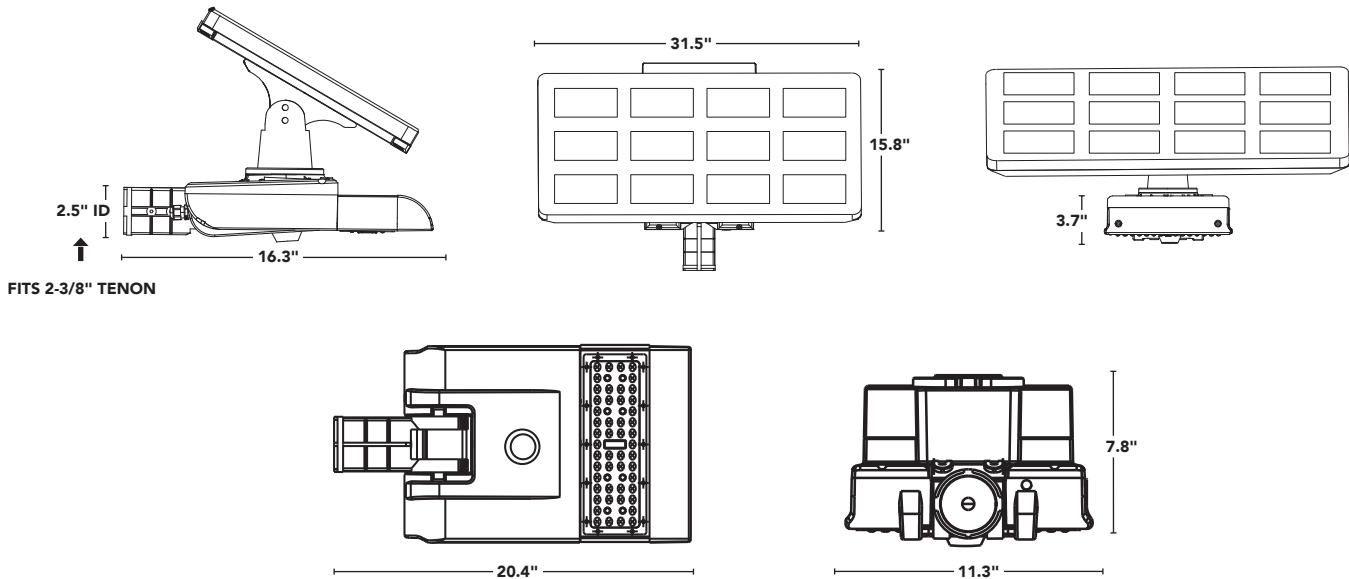
PART #	DESCRIPTION
SL-SAL-50W-2PANELKIT	2X 50W SOLAR PANELS, 10 FOOT EXTENSION CABLE, 6 FOOT Y-CABLE, ADJUSTABLE BRACKET

 FOR LISTING STATUS GO TO LED-LLC.COM

Light Efficient Design

847.380.3540 • led-llc.com • sales@led-llc.com

DIMENSIONS



ACCESSORIES

BRACKETS

PART #	DESCRIPTION
SL-SAL-BKT-RP-BK-G1	ROUND POLE BRACKET
SL-SAL-BKT-SP-BK-G1	SQUARE POLE BRACKET
SL-SAL-BKT-ST-3-BK-G1	TENON ADAPTER FOR 3" SQUARE POLE
SL-SAL-BKT-RT-3-BK-G1	TENON ADAPTER FOR 3" ROUND POLE
SL-SAL-BKT-WM-BK-G1	WALL MOUNT BRACKET

STANDARD SLIP FITTER MOUNTING BRACKET INCLUDED.

CONTACT US FOR ADDITIONAL BRACKET OPTIONS.

OPTIONAL MOUNTING HARDWARE (NOT INCLUDED)

PART #	DESCRIPTION	QTY REQ.
SL-UBOLT-4IN-ROUND	FITS 4" ROUND POLE	4 U-BOLTS
SL-UBOLT-4IN-SQUARE	FITS 4" SQUARE POLE	
SL-UBOLT-5IN-ROUND	FITS 5" ROUND POLE	
SL-UBOLT-5IN-SQUARE	FITS 5" SQUARE POLE	

FOR USE W/ SL-SAL OFF-GRID + HYBRID MODELS



ROUND POLE



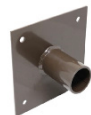
SQ POLE



SQ TENON



ROUND TENON






WALL MOUNT

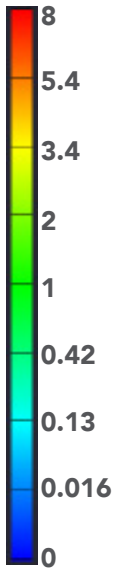
Light Efficient Design

847.380.3540 • led-llc.com • sales@led-llc.com

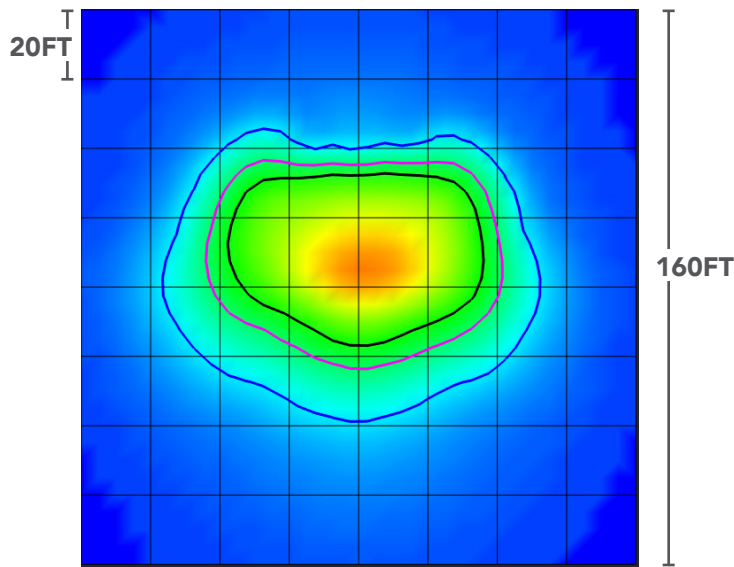
PHOTOMETRICS

FOOT CANDLES	ISO-LINE COLOR
1 FC	BLACK 
0.5 FC	MAGENTA 
0.1 FC	BLUE 

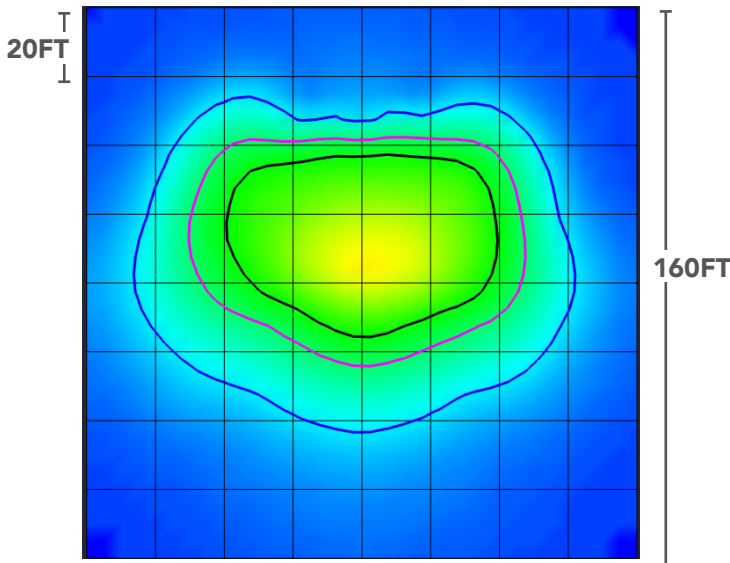
ILLUMINANCE (FC)



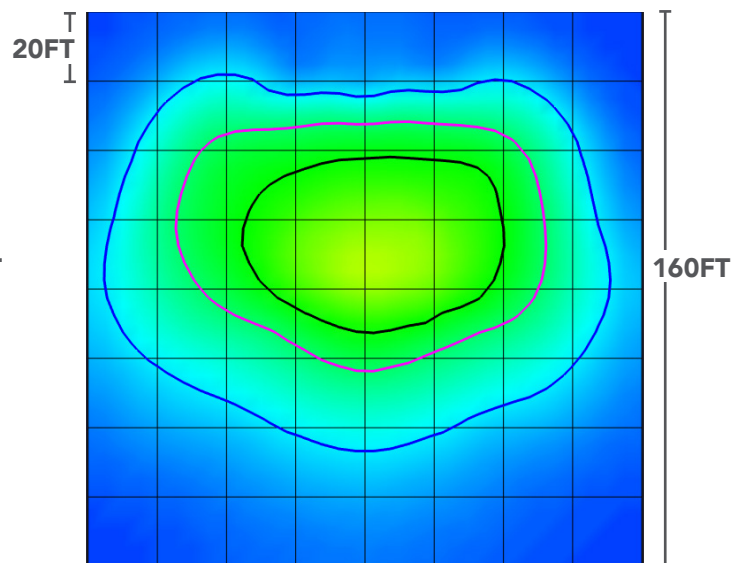
MOUNTING HEIGHT : 20FT



MOUNTING HEIGHT : 25FT



MOUNTING HEIGHT : 30FT



Light Efficient Design

847.380.3540 • led-llc.com • sales@led-llc.com