



**EASY TO  
INSTALL** ↓

Completely off-grid, no need for wiring or trenching. Quick & easy installation. High Performance solar controller maximizes solar charge under all conditions.

- Off-Grid – completely free to operate, plus no trenching or wiring required.
- Exclusive long-lasting battery withstands extreme temperatures
- Easy to install and operate.
- Adjustable solar panel — multiple mounting and lens types available.
- Slip-fitter bracket included with fixture.
- Advanced battery lasts at least 2,000 charge cycles.
- See pg. 2 for product dimensions & accessories.
- See pg. 3 for photometrics.



CERTIFIED BATTERY

BATTERY CHARGE TIME

BATTERY CHARGE TEMP

BATTERY LIFE

REPLACEABLE BATTERY

MOTION SENSING

OPERATING TEMP

100,000hrs RATED LIFE

PART #	UPC	COMPARES TO	LUMENS	COLOR	EPA	LISTINGS
SL-SAL-OG-30W-50K-SF-BK-G2	844006079734	250W	5900	5000K	4.45	CE FC

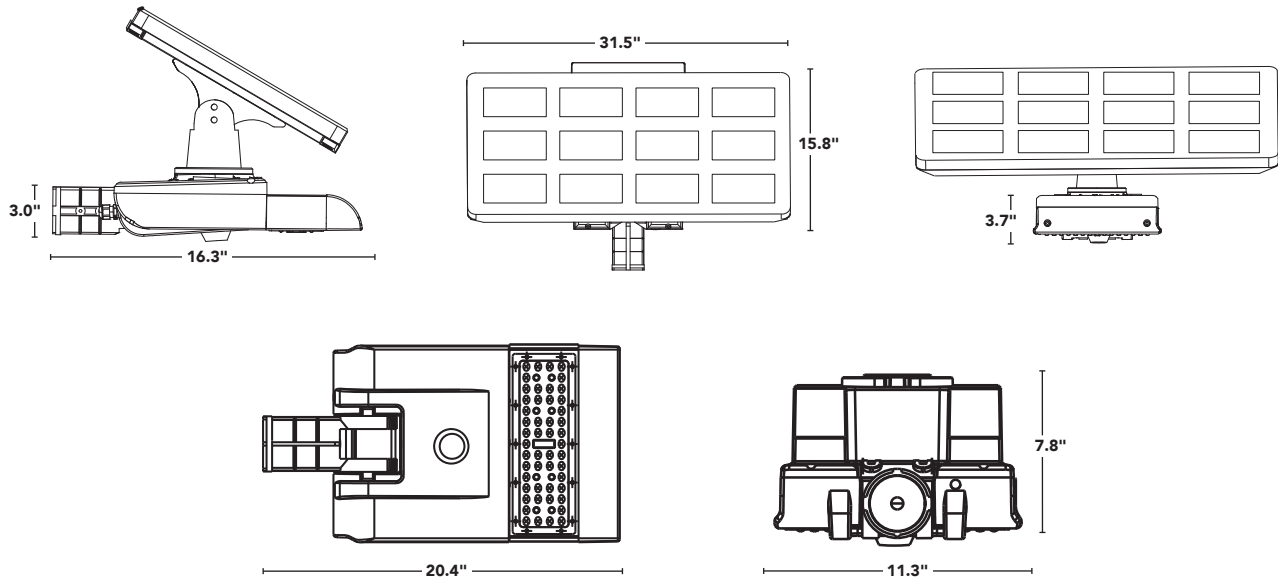
OPERATING MODES |  TIMER |  MOTION SENSING

 FOR LISTING STATUS GO TO [LED-LLC.COM](http://LED-LLC.COM)

**Light Efficient Design**

847.380.3540 • [led-llc.com](http://led-llc.com) • [sales@led-llc.com](mailto:sales@led-llc.com)

## DIMENSIONS



## ACCESSORIES

PART #	DESCRIPTION
SL-SAL-BKT-RP-BK-G1	ROUND POLE BRACKET
SL-SAL-BKT-SP-BK-G1	SQUARE POLE BRACKET
SL-SAL-BKT-ST-3-BK-G1	TENON ADAPTER FOR 3" SQUARE POLE
SL-SAL-BKT-RT-3-BK-G1	TENON ADAPTER FOR 3" ROUND POLE
SL-SAL-BKT-WM-BK-G1	WALL MOUNT BRACKET

ALL MODELS INCLUDE A STANDARD SLIP FITTER MOUNTING BRACKET.

CONTACT US FOR ADDITIONAL BRACKET OPTIONS.

\* INCLUDED STANDARD W/ EACH FIXTURE ORDERED.

### FOR USE W/ SL-SAL OFF-GRID + HYBRID MODELS



ROUND POLE



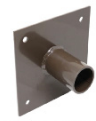
SQ POLE



SQ TENON



ROUND TENON






WALL MOUNT

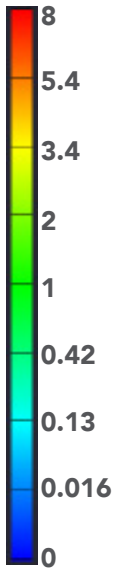
## Light Efficient Design

847.380.3540 • led-llc.com • sales@led-llc.com

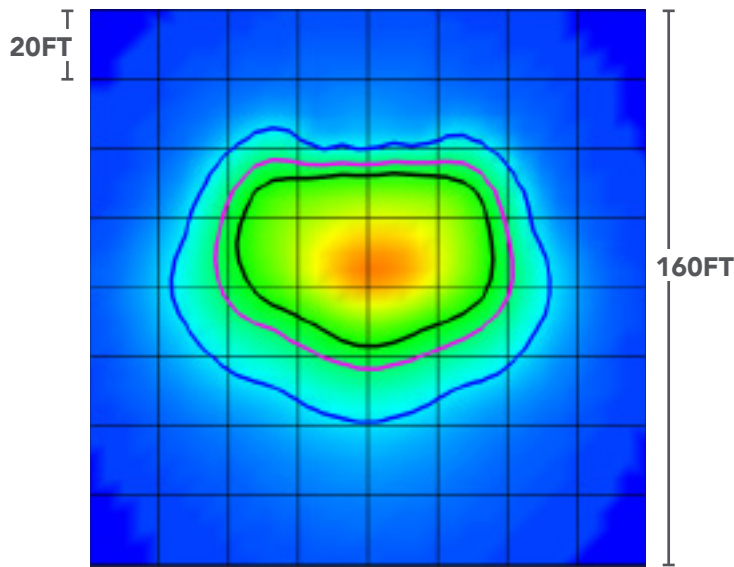
## PHOTOMETRICS

FOOT CANDLES	ISO-LINE COLOR
1 FC	BLACK 
0.5 FC	MAGENTA 
0.1 FC	BLUE 

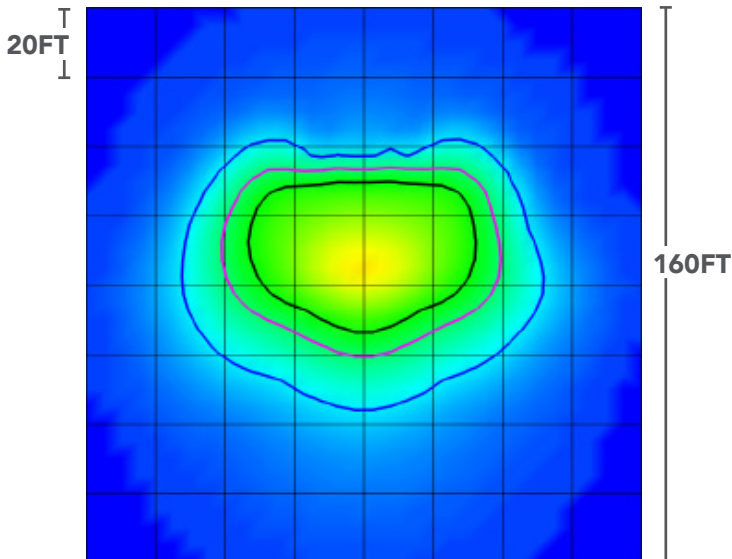
ILLUMINANCE (FC)



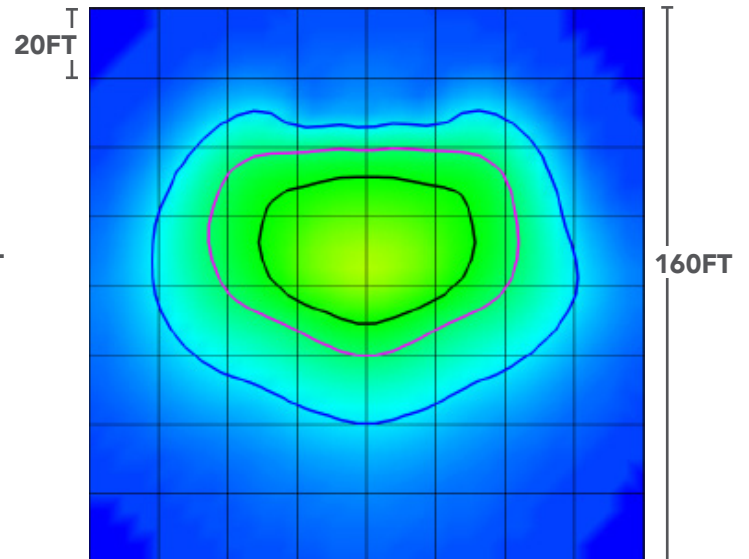
MOUNTING HEIGHT : 15FT



MOUNTING HEIGHT : 20FT



MOUNTING HEIGHT : 25FT



Light Efficient Design

847.380.3540 • led-llc.com • sales@led-llc.com