

...what direction should the solar panel be facing to achieve peak performance?

...how can I extend the battery life of my fixture?

many of our solar fixtures have operating modes such as motion sensing which will help optimize battery performance

not at all, no wiring or trenching means a quick & easy installation

...is it going to take a long time to install my light?

...where should I put my new solar light?

these lights are completely off-grid, so you can put them anywhere you need light

this is determined by your geographic location — for example, in the northern hemisphere a south facing solar panel is ideal

## Solera Solar Lighting

by Light Efficient Design

Design

is the first

to market with

easy to use,

reliable,

plug & play,

all-in-one solar

lighting products.



FREE TO SHINE



welcome to a solar city

## HYBRID 365

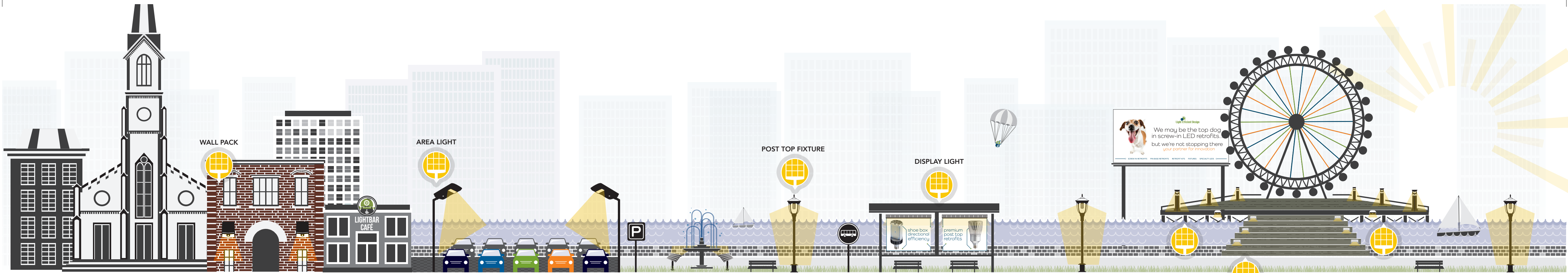
AREA LIGHT | RP-SAL\_HYB  
COMPARES TO 250W HID

- Distinctly unique — uses a combination of solar power and line voltage if needed
- All-in-one design
- Easy to install
- Adjustable solar panel — multiple mounting and lens types available



LIGHT EFFICIENT DESIGN 847.380.3540 • solera-solar.com

 Light Efficient Design



- All-in-one design, the solar panel and battery are built right into the LED fixture
- No need for trenching or wiring, this fixture does not connect to any power feed
- Long life battery lasts multiple nights with a one day charge

**WALL PACK | RP-SWL**  
2 MODELS COMPARE TO  
50W AND 100W HALOGEN



**AREA LIGHT | RP-SAL**  
2 MODELS COMPARE TO  
70W AND 250W HID



 Turtle friendly series available

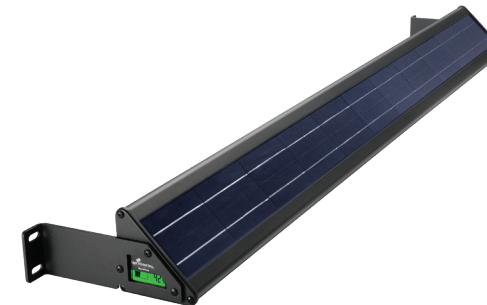
**FLOOD LIGHT | RP-SFL**  
COMPARES TO 150W HID



**POST TOP FIXTURE | RP-SPT**  
COMPARES TO 150W HID



**DISPLAY LIGHT | RP-SDL**  
COMPARES TO 150W HID



**BOLLARD FIXTURE | RP-SBL**  
COMPARES TO 30W HALOGEN



**STEP LIGHT | RP-SSL**  
COMPARES TO 20W HALOGEN



**WALL MOUNT LIGHT | RP-SML**  
COMPARES TO 35W HALOGEN



- Fixture automatically turns 'on' at night
- Highly efficient solar panel collects sunlight to charge battery
- Classic designs help fixture fit seamlessly in any environment