



The I-Series is a professional grade, configurable solar powered lighting system that is designed to provide exceptional exterior lighting performance while offering high quality and value.

- **Flexible-system** is engineered to allow numerous configurations and operating conditions.
 - Light fixture choices for area lighting, pedestrian lighting and billboard lighting.
 - Intelligent controller switches from battery to AC power when needed. (optional)
 - Adjustable CCT and light output.
 - Pole kit available with all components to install with new poles.
 - Retrofit kit available for sites with existing poles.
- **High performance** system where components have been selected to provide efficient operation within a compact package. The system is designed for excellent year-round performance, even in challenging environments.
- **Intelligent remote connection** using Solera Connect Software allows for remote monitoring and control of the system from App or website (see pg 3. for more information on Solera Connect App).
 - Local or remote programming for light settings and sensor settings.
 - Remote monitoring confirms that all lights are operating as expected.
 - Exception report calls attention to unexpected conditions.
 - Compile and report solar energy generation for sustainability reporting and possible tax credits.

FLEXCOLOR SWITCH BETWEEN 3 CCTs



STANDARD



OPTIONAL*



BATTERY SAFETY



FULL POWER ALL NIGHT**



BATTERY CHARGE TIME



BATTERY CHARGE TEMP



BATTERY LIFE**



REPLACEABLE BATTERY



OPERATING TEMP



OPTIONAL MOTION SENSING



100,000hrs RATED LIFE

PART #	UPC	LUMENS	COLOR	EPA
SL-MA1-OG-1000634B1-TAA	197810015048	ADJUSTABLE UP TO 10,000	3000K/4000K/5000K	8.0
SL-MA1-HYB-1000634B1-TAA	197810015062			

*OPTIONAL 10 YEAR WARRANTY WILL HAVE AN ADDED COST
**BATTERY LIFE DEPENDS ON ENVIRONMENT AND POWER SETTINGS

Light Efficient Design

847.380.3540 • led-llc.com • sales@led-llc.com



PART NUMBER BUILDER

BRAND	SERIES	TYPE		LUMENS	BATTERY	OPTICS	MODULE	COLOR	GENERATION
SL	M	A1		100	06		4	B	1
SOLERA	MODULAR	AREA LIGHT STYLE 1	OG - OFF-GRID HYB - HYBRID	10,000 LUMENS	600 WH BATTERY	2-TYPE 2 OPTICS 3-TYPE 3 OPTICS 4-TYPE 3 OPTICS 5-TYPE 3 OPTICS	4G MODULE PRESENT	BLACK	GENERATION 1

EXAMPLE PART NUMBER / SL-MA1-OG-1000634B1-TAA

LIGHT ENGINE

LED	192 LED. 3030 HIGH EFFICACY
MAX. POWER	100W
EFFICACY	160+ LUMENS PER WATT
CRI	70+
MAX. LUMENS	10,000 LUMENS
CCT	3000K, 4000K, 5000K SELECTABLE
CONTROLLER	MPPT CHARGE CONTROLLER
HYBRID OPTION	AC HYBRID POWER
4G OPTION	4G MODULE FOR SOLERA CONNECT
OPTICS OPTIONS	TYPE 2, TYPE 3, TYPE 4, TYPE 5
SHIELD OPTIONS	BACK LIGHT SHIELD, FULL CUTOFF SHIELD

SOLAR PANEL

TYPE	MONOCRYSTALLINE
WATTS	55W PER PANEL
VOLTAGE	12V
ADJUSTABLE	ANGLE AND ROTATION ARE FULLY ADJUSTABLE
CHARGE TIME	6 HOURS
DIMENSIONS	27.1" X 19.2" X 2.2"
WEIGHT	38.50 LB
INGRESS PROTECTION	IP65

BATTERY

TYPE	LIFEPO4
CHARGING TEMP	-4° TO 140°F
DISCHARGING TEMP	-40° TO 140°F
REPLACEABLE	YES
CHARGE CYCLES	2000+
CHARGE VOLTAGE	14.6V
AMPERE-HOURS	50
WATT HOURS	600
WEIGHT	11.4 LBS
BMS SYSTEM	ONBOARD FULL PROTECTION

AREA LIGHT ASSEMBLY

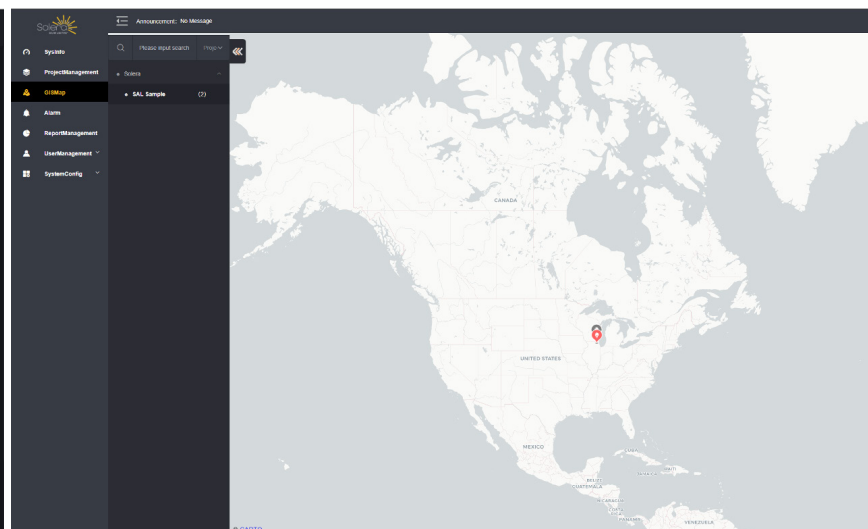
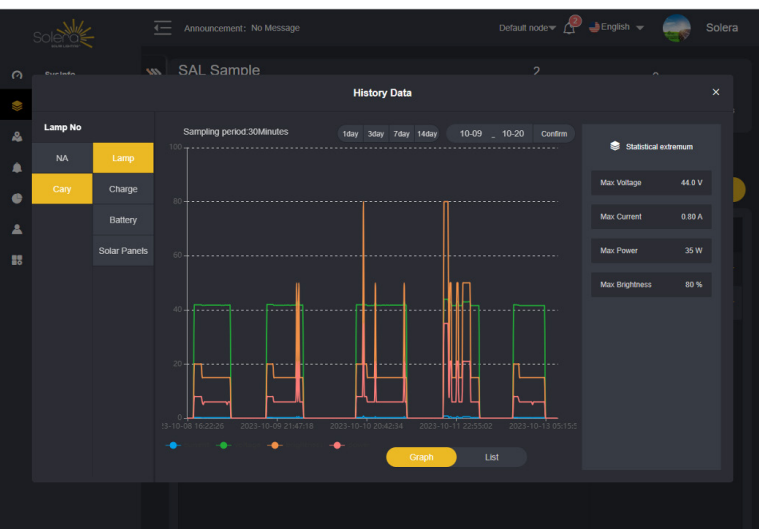
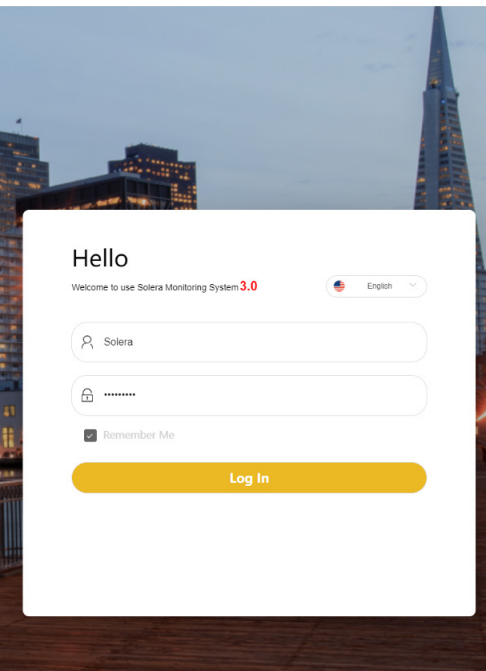
DESCRIPTION	MEDIUM
SOLAR PANEL	2 X 55W
BATTERY	600 WH
LIGHT HEAD	50W / 10,000 LUMENS
EPA	8.0 FT2
WEIGHT	TBD

Light Efficient Design

847.380.3540 • led-llc.com • sales@led-llc.com

The Solera Connect App empowers the user to remotely monitor the performance of their solar lighting networks. It operates through either a web portal or mobile app. The user can efficiently monitor, control and program the lights from any location with 4G service.

- 4GLTE monitoring system for quick, secure setup and operation.
- One cellular connection per fixture for fully off-grid monitoring.
- Easy in-field set up. App available on Android and IOS.
- Active/Alarm GIS chart to show status notifications, alarms and system status. Map available so you can quickly and locate and monitor the health of your solar lights.
- Preset programming modes for quick and easy setup.
- All-in-one MPPT charging and LED driver, reducing points of failure and saving cost.
- Rugged IP65 rated controller to assure constant running even as the fixture seals fail.
- Over air upgrades to keep your lights up to date, effortlessly.
- Site grouping and custom control setup.
- Shows Zone Specific Coal Savings, how much CO2 emissions were reduced and how much SO2 emissions were reduced.
- Graphically show usage and demand.
- Alarm work order generation process built in and tech service confirmation.



Light Efficient Design

847.380.3540 • led-llc.com • sales@led-llc.com