



**I-SERIES PROFESSIONAL GRADE, CONFIGURABLE, SOLAR POWERED LIGHTING SYSTEM.** Build and remotely program, control and monitor an intelligent solar lighting network. Graphically show usage and demand.

**FLEXIBLE-SYSTEM** configure the Intelligent modular area light to fit your application.

- Area lighting, pedestrian lighting and billboard lighting.
- Intelligent controller switches from battery to AC power as needed. (optional).
- Adjustable CCT and light output.
- Available as a retrofit kit for sites with existing poles or with pole kit if needed.

#### SET UP YOUR NETWORK W/ SOLERA CONNECT

Preset programming modes make programming lights and sensor settings quick and easy.












- Locally or remotely program light and sensor settings.
- Create one or more projects.
- Site grouping and custom control setup.

#### BI-DIRECTIONAL COMMUNICATION OVER A CELLULAR NETWORK

Allows for remote monitoring and control of the solar collection, battery state, and lighting parameters.

- Each light included in a project is individually accessible.
- Get status updates to be alerted to unexpected conditions.
- Track solar energy generation for sustainability reporting and possible tax credits.

**FLEXCOLOR**  
SWITCH BETWEEN 3 CCTs

 STANDARD	 OPTIONAL*	 BATTERY SAFETY	 FULL POWER ALL NIGHT**	 BATTERY CHARGE TIME	 BATTERY CHARGE TEMP	 BATTERY LIFE**	 REPLACEABLE BATTERY	 OPERATING TEMP	 OPTIONAL MOTION SENSING	 100,000hrs RATED LIFE
--	--	---	---	--	--	---	--	---	--	--

PART #	UPC	LUMENS	CCT	EPA
SL-MA1-OG-1000634B1-TAA	197810015048	ADJUSTABLE UP TO 10,000	3000K/4000K/5000K	8.0
SL-MA1-HYB-1000634B1-TAA	197810015062			

\*OPTIONAL 10 YEAR WARRANTY WILL HAVE AN ADDED COST  
\*\*BATTERY LIFE DEPENDS ON ENVIRONMENT AND POWER SETTINGS

### Light Efficient Design

847.380.3540 • led-llc.com • sales@led-llc.com

PART NUMBER BUILDER

BRAND	SERIES	TYPE		LUMENS	BATTERY	OPTICS	MODULE	COLOR	GENERATION
SL	M	A1		100	06		4	B	1
SOLERA	MODULAR	AREA LIGHT STYLE 1 A	OG / OFF-GRID HYB / HYBRID	10,000	600 WH	2 / TYPE 2 3 / TYPE 3 4 / TYPE 4 5 / TYPE 5	4G (PRESENT)	BLACK	GEN 1

EXAMPLE PART NUMBER / SL-MA1-OG-1000634B1-TAA

LIGHT ENGINE

LED	192 LED. 3030 HIGH EFFICACY
MAX. POWER	100W
EFFICACY	160+ LUMENS PER WATT
CRI	70+
MAX. LUMENS	10,000 LUMENS
CCT	3000K, 4000K, 5000K SELECTABLE
CONTROLLER	MPPT CHARGE CONTROLLER
HYBRID OPTION	AC HYBRID POWER
4G OPTION	4G MODULE FOR SOLERA CONNECT
OPTICS OPTIONS	TYPE 2, TYPE 3, TYPE 4, TYPE 5
SHEILD OPTIONS	BACK LIGHT SHIELD, FULL CUTOFF SHIELD

SOLAR PANEL

TYPE	MONOCRYSTALLINE
WATTS	55W PER PANEL
VOLTAGE	12V
ADJUSTABLE	ANGLE AND ROTATION ARE FULLY ADJUSTABLE
CHARGE TIME	6 HOURS
DIMENSIONS	27.1" X 19.2" X 2.2"
WEIGHT	38.50 LB
INGRESS PROTECTION	IP65

BATTERY

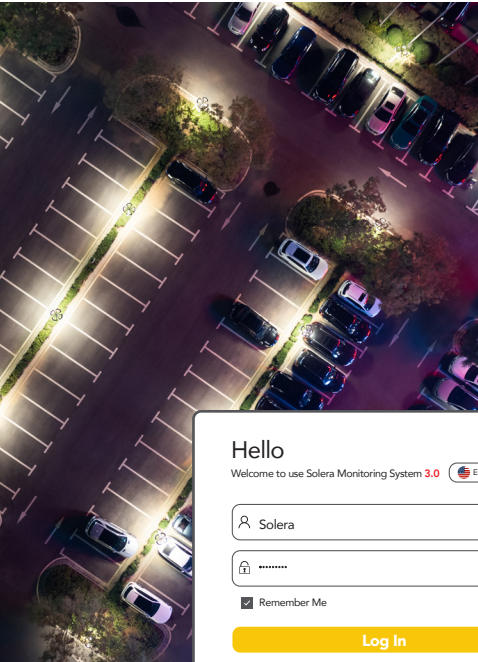
TYPE	LIFEPO4
CHARGING TEMP	-4° TO 140°F
DISCHARGING TEMP	-40° TO 140°F
REPLACEABLE	YES
CHARGE CYCLES	2000+
CHARGE VOLTAGE	14.6V
AMPERE-HOURS	50
WATT HOURS	600
WEIGHT	11.4 LBS
BMS SYSTEM	ONBOARD FULL PROTECTION

AREA LIGHT ASSEMBLY

DESCRIPTION	MEDIUM
SOLAR PANEL	2 X 55W
BATTERY	600 WH
LIGHT HEAD	50W / 10,000 LUMENS
EPA	8.0 FT2
WEIGHT	TBD

Light Efficient Design

847.380.3540 • led-llc.com • sales@led-llc.com



Hello

Welcome to use Solera Monitoring System 3.0 English

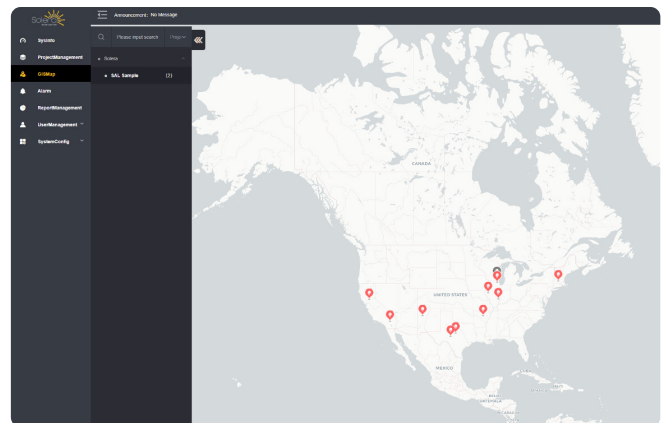
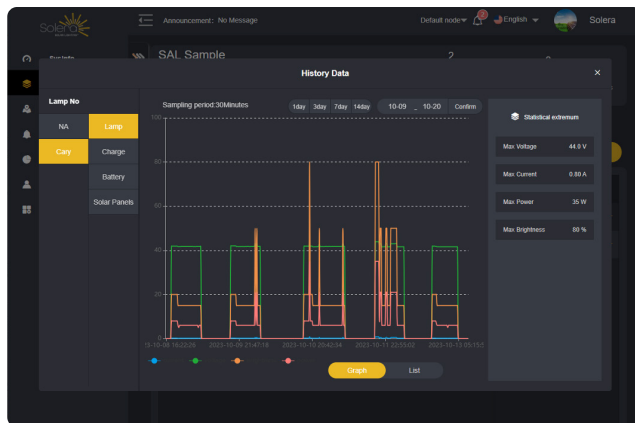
☒ Remember Me

[Log In](#)

Remotely monitor the performance of your solar lighting networks. Access Solera Connect via the web portal or mobile app. Efficiently monitor, control and program the lights from any location with 4G service.

- 4GLTE monitoring system for quick, secure setup and operation.
- One cellular connection per fixture for fully off-grid monitoring.
- Easy in-field set up. App available on Android and IOS.
- Active/Alarm GIS chart to show status notifications, alarms and system status. Map available so you can quickly and locate and monitor the health of your solar lights.
- Preset programming modes for quick and easy setup.
- All-in-one MPPT charging and LED driver, reducing points of failure and saving cost.
- Rugged IP65 rated controller to assure constant running even as the fixture seals fail.
- Over air upgrades to keep your lights up to date, effortlessly.
- Site grouping and custom control setup.
- Shows Zone Specific Coal Savings, how much CO2 emissions were reduced and how much SO2 emissions were reduced.
- Graphically show usage and demand.
- Alarm work order generation process built in and tech service confirmation.

## EXAMPLE OF CUSTOMER DASHBOARD



## Light Efficient Design

847.380.3540 • led-llc.com • sales@led-llc.com