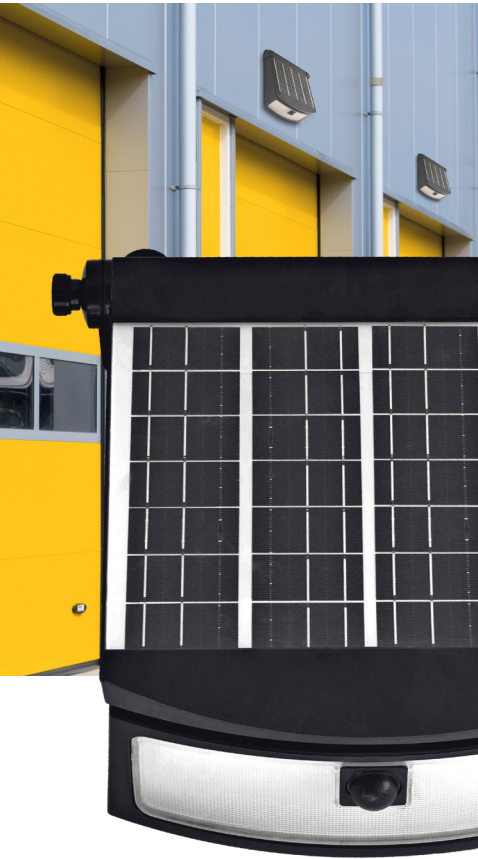
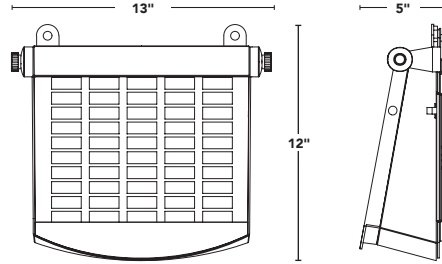


FEATURES A FLEXIBLE DESIGN FOR MULTIPLE MOUNTING OPTIONS, NO NEED FOR A POWER SOURCE. This product features a detachable solar panel, allowing for optimal positioning even when the wall pack is situated in the shade. This ensures maximum efficiency and energy capture regardless of the installation location.

- Compares to 100W HID
- 1600 lumen maximum output
- Easily switch between CCTs w/ the push of a button
- Adjustable and detachable panel
- Easy installation w/ included backplate
- Optional magnetic mount – each magnet holds up to 35 lbs for a total pull strength of 140 lbs



--- DETACHABLE SOLAR PANEL W/ 10 FT CABLE



FLEXCOLOR
SWITCH BETWEEN 3 CCTs



BATTERY CHARGE TIME



BATTERY CHARGE TEMP



BATTERY LIFE*



BEAM ANGLE



OPERATING TEMP



50,000hrs RATED LIFE

PART #	UPC	COMPARES TO	LUMENS	CCT	LISTINGS
SL-SWL-16L-FC-BK-G3	197810000075	100W HID	1600	FLEXCOLOR 3000K/4000K/5000K	CE FC
SL-SWL-16L-FC-BK-G3-M	197810029700				

OPERATING MODES  CONSTANT BRIGHTNESS |  MOTION SENSING

* BATTERY LIFE DEPENDS ON ENVIRONMENT AND POWER SETTINGS

** UNDER ADVERSE CONDITIONS, A LOWER POWER MODE MAY NEED TO BE CHOSEN

Light Efficient Design

847.380.3540 • led-llc.com • sales@led-llc.com

 MAGNETIC MOUNTING



solera-solar.com